

ATP 300 PRO



ATP-300 Pro

Industrial desktop labelprinter



ATP 300 PRO

Printer specifications

Print resolution	300 DPI (12 dots/mm)
Printing method	Thermal transfer / direct thermisch
Max. print speed	152 mm / second
Max. print width	106 mm
Max. print length	11.430 mm
Printer dimensions (WxHxD)	226 (W) x 198 (H) x 332 (D) mm
Weight	3,75 kg
Label roll capacity	127 mm (outside dimension)
Ink ribbon	300 meter - max. OD 67 mm
Memory	<ul style="list-style-type: none"> • 128 MB Flash memory • 128 MB SDRAM • MicroSD card reader - up to 32 GB

Interface & control

Connectivity	USB 2.0 - USB host - Ethernet 10/100 Mbps; Optional: Wi-Fi / Bluetooth
Display	3.5" TFT color display
Control	6 physical buttons

Supported media

Media types	Die-cut, fan-fold, continuous
Detection (sensors)	Notch, Gap, Black mark
Media thickness	0,055 - 0,254 mm
Media width	19 - 112 mm
Label length	3 - 11.430 mm

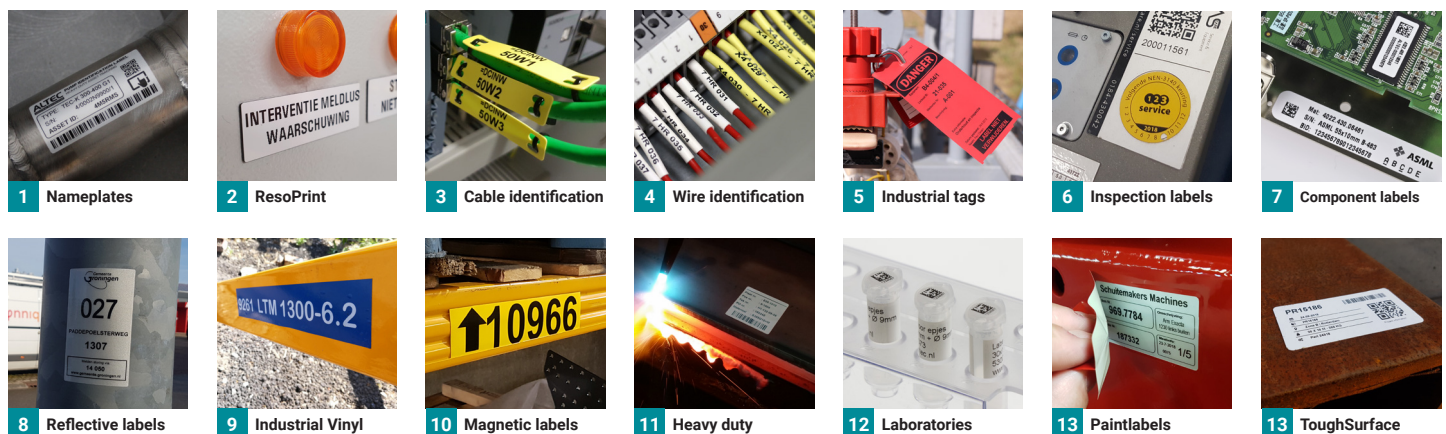
Optional accessories

Cutter	Automatic cutter module
Carrying case	Printing on location

Warranty

5 years	On all parts
---------	--------------

Label applications



Industrial desktop labelprinter

High print resolution

300 DPI print head

Color display

Menu functions and printer information

Easy label loading

Auto centering label holders

Interfaces

USB & Ethernet (optional: Wi-Fi / Bluetooth)

Metal tear-off bar

Tear off labels easily after printing

Stand-alone printing

With keyboard and/or barcode scanner

Certified Windows Driver

Automatic recognition in Windows

